

**PRACTICAL**  
*Dermatology*

**Advertising Index December 2005**

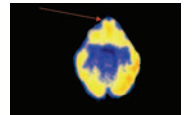
<b>Advertiser</b> .....	<b>Page</b>
ADA/M..... www.ada-m.org (510) 839-2326	19
Coria Laboratories..... www.corialabs.com (866) 819-9007	45-46
Dermik..... www.dermik.com (800) 340-7502	39-40
Ortho-Neutrogena..... www.orthoderm.com (877) 738-4624	2-4
Procyte/PhotoMedex..... www.procyte.com (888) 966-1010	11
www.photomedex.com (877) 44-XTRAC	
South Beach Symposium..... www.southbeachsymposium.org (850) 531-8386	15
Stiefel..... www.stiefel.com/USA (888) 784-3338	21-22, 59-60

For advertising inquiries, please contact  
Tom Gangemi, Publisher  
(610) 238-9052, ext. 11 or  
tgangemi@avondalemedical.com

**Practical Pearls In This Issue**

**C**apital budgeting is an integral part of the overall budgeting process. In order to create the capital budget, identify anticipated purchases, estimated cost, and timing of the acquisition. Forecasting capital expenditures should relate directly to the stated goals and objectives of the practice as set forth in its business plan. p. 12

**F**or isotretinoin to effect depression and suicide, it must be acting through the brain. The high rate of neurological side effects in treated patients supports the idea that isotretinoin does act on the brain. Headache is the second most common side effect of isotretinoin behind dry skin. p. 30



**E**ffective July 5, 2005, Medicare carriers began tracking the number of paper claims filed by each provider for each quarter. By the end of the month following quarter end, providers with the highest numbers of paper claims will be reviewed and asked to provide information establishing an exception. p. 18

**T**hough results of treatment are not as dramatic as with topical retinoids, furfuryladenine (Kinerase, Valeant) has been shown to provide benefit in the treatment of photoaging and is in my practice an option for patients who cannot tolerate topical retinoids. To date, only a rare patient has been unable to tolerate this product due to irritation. p. 16

**T**he degree of wrinkling and volume loss, the nature of the patient's concern with them, and the desired longevity of improvement varies from case-to-case. Therefore, there is no one approach to use of dermal fillers that applies to every patient. As Mark G. Rubin, MD put it, "There is a multitude of products out there. There is no one product that is the right one for every patient." p. 38

**T**he all-in-one printer/scanner/fax has proven especially useful for handling items such as pathology reports. These are automatically directed to the appropriate nurse or other staffer who reviews them and then can immediately upload them to the patient's medical file using our EMR system. Alternatively, for paper records, the recipient could print the report and file it in the record. p. 44



**A**lthough seemingly trivial, a personalized greeting with a supportive tone in a referral letter is not overlooked. It remains incumbent upon both the referring and consulting physicians to communicate effectively and in a timely manner to facilitate patient care. p. 48

**L**ast month's FDA approval for Clobex Spray (clobetasol propionate, Galderma) "is significant simply because we have not had any topical agents in 10 years," says Alan Menter, MD. Clobex Spray 0.05% is a super-high potency corticosteroid non-aerosol spray formulation available in a 2 fl oz. bottle and indicated for twice-daily application to psoriatic lesions. In a recent study, 78 percent of patients were clear or almost clear after four weeks of treatment. p. 51



**A**dult Refsum's Disease should be considered in the differential diagnosis of any patient who presents with a delayed onset of ichthyosis in association with neurologic impairment. Detection of elevated levels of plasma phytanic acid confirm diagnosis. p. 58